



Customer: AP Sleeping Indian LLC
Customer Sample ID: NP 100 1
Laboratory Number: 20F0185-01

Density: 0.9522



Cannabinoid Profile

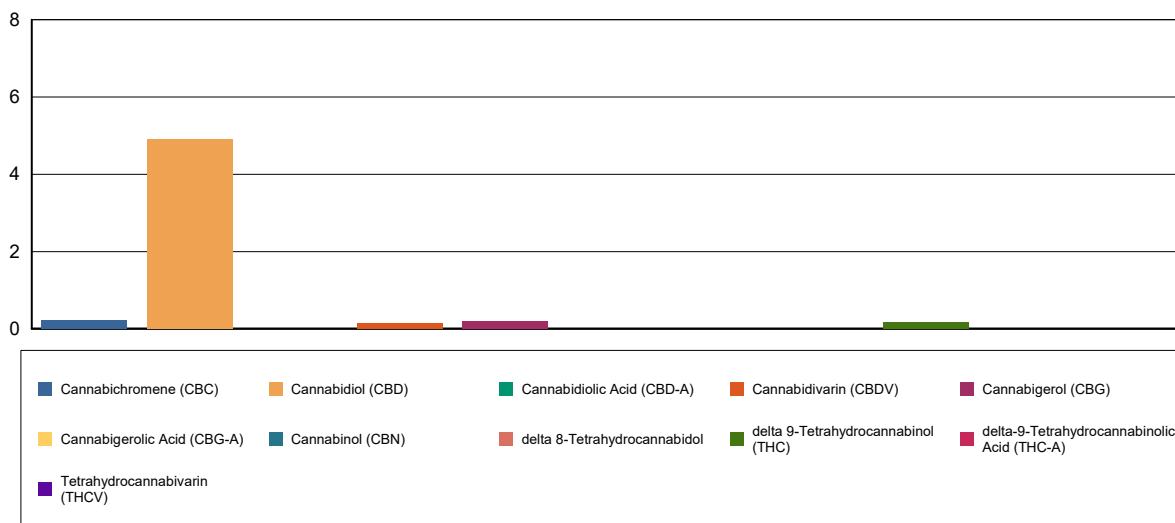
Extraction Technician: DF
Analytical Chemist: CB

Extraction Date(s)	Analysis Date(s)
6/18/2020	6/19/2020

Cannabinoids (HPLC)		Results	
	LOD (mg/mL)	%	mg/mL
Cannabidiarin (CBDV)		0.02	0.152
Cannabidiolic Acid (CBD-A)	<0.080		
Cannabigerolic Acid (CBG-A)	<0.080		
Cannabigerol (CBG)		0.02	0.184
Cannabidiol (CBD)		0.49	4.90
Tetrahydrocannabivarin (THCV)	<0.080		
Cannabinol (CBN)	<0.080		
delta 9-Tetrahydrocannabinol (THC)		0.02	0.175
delta 8-Tetrahydrocannabidol	<0.080		
Cannabichromene (CBC)		0.02	0.238
delta-9-Tetrahydrocannabinolic Acid (THC-A)	<0.080		
Cannabinoids Total		%	mg/mL
Max Active THC		0.02	0.18
Max Active CBD		0.49	4.90
T.Active Cannabinoids		0.55	5.50
Total Cannabinoids		0.57	5.65

Following USDA guidelines on uncertainty, Altitude Consulting's uncertainty are calculated for CBDa and CBD at +/- 4%.
 The uncertainty for THCa and THC are +/- 5%. This implies the range for a 10% value of CBD to be 9.6-10.4%. The
 uncertainty range for a 0.30% value of THC would be 0.28-0.32%.

Cannabinoid (mg/mL)



Reporting Limits will vary based on sample extraction weight used for the analysis.

Altitude Consulting, LLC utilizes NIST traceable Reference Standards and Certified Reference Material to calibrate analytical instruments along with proven analytical methods.
 The methods are applied in the most ethical manner following good laboratory practice guidelines. The results of this report are based solely on the sample submitted and cannot be reproduced.



Customer: AP Sleeping Indian LLC
Customer Sample ID: NP 500-1
Laboratory Number: 20F0185-02

Density: 0.9522



Cannabinoid Profile

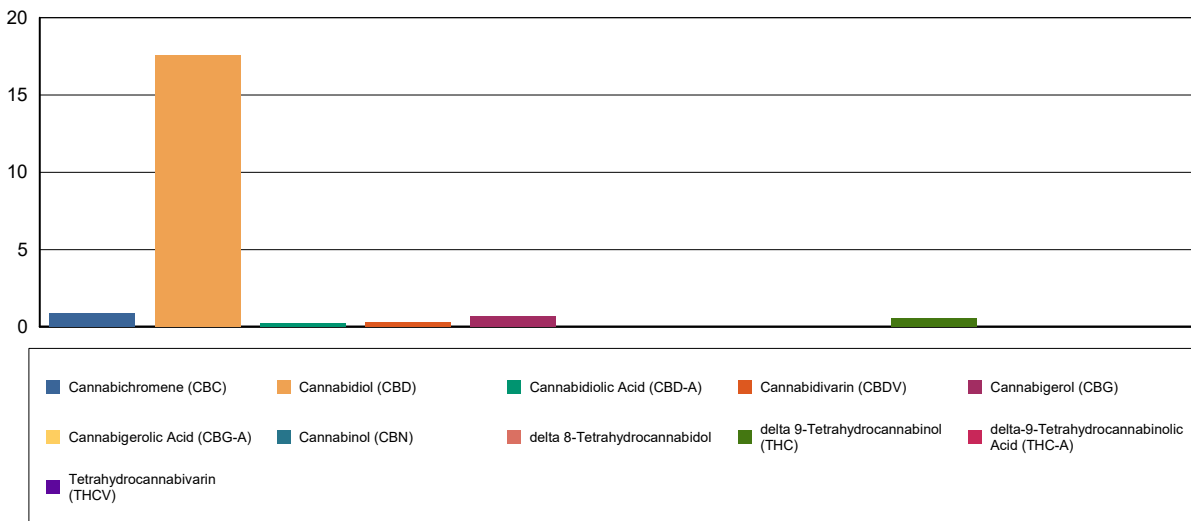
Extraction Technician: DF
Analytical Chemist: CB

Extraction Date(s)	Analysis Date(s)
6/18/2020	6/19/2020

Cannabinoids (HPLC)		Results	
	LOD (mg/mL)	%	mg/mL
Cannabidiol (CBD)		1.76	17.6
delta 9-Tetrahydrocannabinol (THC)		0.06	0.588
Cannabidiol (CBD)		1.78	17.80
T.Active Cannabinoids		1.97	19.70
Total Cannabinoids		2.03	20.30
Max Active THC		0.06	0.59
Max Active CBD		1.78	17.80
T.Active Cannabinoids		1.97	19.70
Total Cannabinoids		2.03	20.30
Cannabidiol (CBD)		1.76	17.6
delta 9-Tetrahydrocannabinol (THC)		0.06	0.588
Cannabidiol (CBD)		1.78	17.80
T.Active Cannabinoids		1.97	19.70
Total Cannabinoids		2.03	20.30
Max Active THC		0.06	0.59
Max Active CBD		1.78	17.80
T.Active Cannabinoids		1.97	19.70
Total Cannabinoids		2.03	20.30

Following USDA guidelines on uncertainty, Altitude Consulting's uncertainty are calculated for CBDa and CBD at +/- 4%.
 The uncertainty for THCa and THC are +/- 5%. This implies the range for a 10% value of CBD to be 9.6-10.4%. The
 uncertainty range for a 0.30% value of THC would be 0.28-0.32%.

Cannabinoid (mg/mL)



Reporting Limits will vary based on sample extraction weight used for the analysis.

Altitude Consulting, LLC utilizes NIST traceable Reference Standards and Certified Reference Material to calibrate analytical instruments along with proven analytical methods.
 The methods are applied in the most ethical manner following good laboratory practice guidelines. The results of this report are based solely on the sample submitted and cannot be reproduced.



Customer: AP Sleeping Indian LLC
Customer Sample ID: NP 1000-1
Laboratory Number: 20F0185-03

Density: 0.9522



Cannabinoid Profile

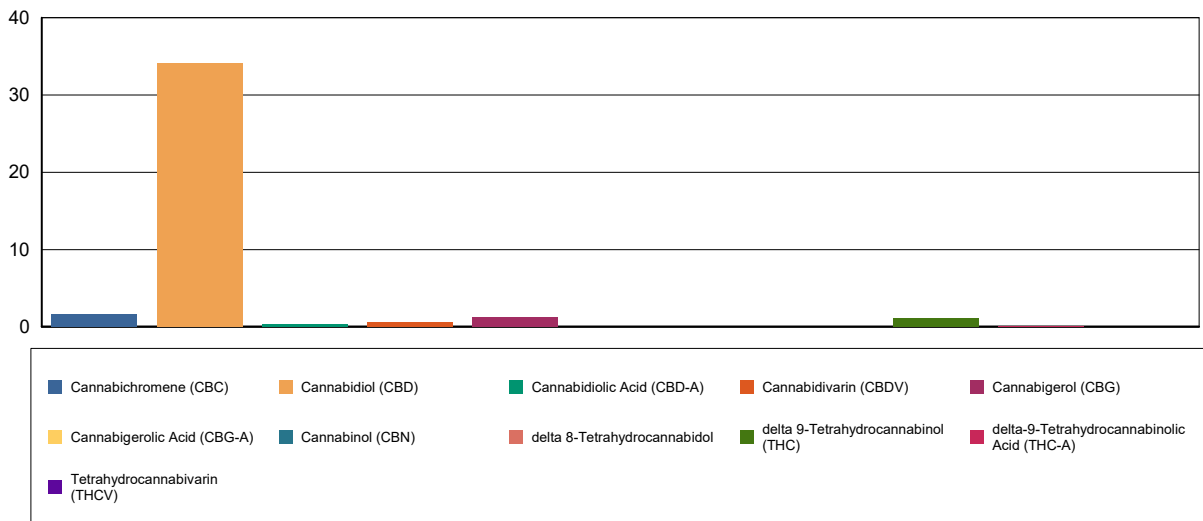
Extraction Technician: DF
Analytical Chemist: CB

Extraction Date(s)	Analysis Date(s)
6/18/2020	6/19/2020

Cannabinoids (HPLC)		Results	
	LOD (mg/mL)	%	mg/mL
Cannabidiarin (CBDV)		0.06	0.634
Cannabidiolic Acid (CBD-A)		0.04	0.400
Cannabigerolic Acid (CBG-A)	<0.10		
Cannabigerol (CBG)		0.13	1.30
Cannabidiol (CBD)		3.41	34.1
Tetrahydrocannabivarin (THCV)	<0.10		
Cannabinol (CBN)	<0.10		
delta 9-Tetrahydrocannabinol (THC)		0.11	1.15
delta 8-Tetrahydrocannabidol	<0.10		
Cannabichromene (CBC)		0.17	1.68
delta-9-Tetrahydrocannabinolic Acid (THC-A)		0.01	0.116
Cannabinoids Total		%	mg/mL
Max Active THC		0.13	1.25
Max Active CBD		3.45	34.45
T.Active Cannabinoids		3.83	38.30
Total Cannabinoids		3.94	39.40

Following USDA guidelines on uncertainty, Altitude Consulting's uncertainty are calculated for CBDa and CBD at +/- 4%.
 The uncertainty for THCa and THC are +/- 5%. This implies the range for a 10% value of CBD to be 9.6-10.4%. The
 uncertainty range for a 0.30% value of THC would be 0.28-0.32%.

Cannabinoid (mg/mL)



Reporting Limits will vary based on sample extraction weight used for the analysis.

Altitude Consulting, LLC utilizes NIST traceable Reference Standards and Certified Reference Material to calibrate analytical instruments along with proven analytical methods.
 The methods are applied in the most ethical manner following good laboratory practice guidelines. The results of this report are based solely on the sample submitted and cannot be reproduced.



Customer: AP Sleeping Indian LLC
Customer Sample ID: NP 2000-1
Laboratory Number: 20F0185-04

Density: 0.9522



Cannabinoid Profile

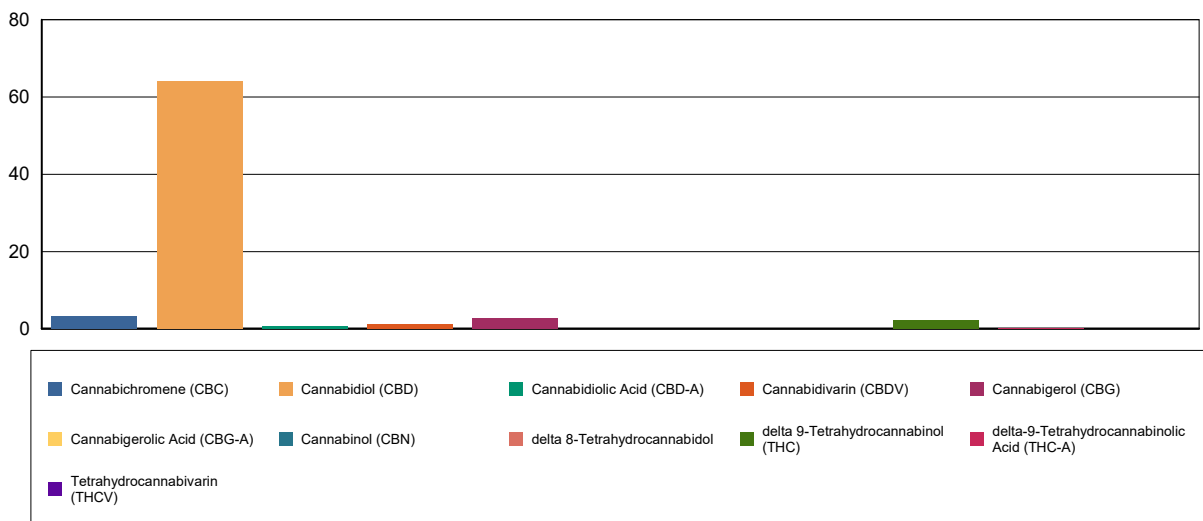
Extraction Technician: DF
Analytical Chemist: CB

Extraction Date(s)	Analysis Date(s)
6/18/2020	6/19/2020

Cannabinoids (HPLC)		Results	
	LOD (mg/mL)	%	mg/mL
Cannabidivarin (CBDV)		0.13	1.31
Cannabidiolic Acid (CBD-A)		0.08	0.804
Cannabigerolic Acid (CBG-A)	<0.080		
Cannabigerol (CBG)		0.27	2.67
Cannabidiol (CBD)		6.39	63.9
Tetrahydrocannabivarin (THCV)	<0.080		
Cannabinol (CBN)	<0.080		
delta 9-Tetrahydrocannabinol (THC)		0.23	2.27
delta 8-Tetrahydrocannabidol	<0.080		
Cannabichromene (CBC)		0.33	3.31
delta-9-Tetrahydrocannabinolic Acid (THC-A)		0.02	0.209
Cannabinoids Total		%	mg/mL
Max Active THC		0.25	2.45
Max Active CBD		6.46	64.61
T.Active Cannabinoids		7.22	72.20
Total Cannabinoids		7.45	74.50

Following USDA guidelines on uncertainty, Altitude Consulting's uncertainty are calculated for CBDa and CBD at +/- 4%.
 The uncertainty for THCa and THC are +/- 5%. This implies the range for a 10% value of CBD to be 9.6-10.4%. The
 uncertainty range for a 0.30% value of THC would be 0.28-0.32%.

Cannabinoid (mg/mL)



Reporting Limits will vary based on sample extraction weight used for the analysis.

Altitude Consulting, LLC utilizes NIST traceable Reference Standards and Certified Reference Material to calibrate analytical instruments along with proven analytical methods.
 The methods are applied in the most ethical manner following good laboratory practice guidelines. The results of this report are based solely on the sample submitted and cannot be reproduced.